

# M I S S I O N S BLUEPRINTS

## Build a Transformer Desk, Part 1

By M.B. Howard

If you have ever wanted to take your office with you, now you can. With this blueprint, you can build a transformer desk that folds around a filing cabinet.

In disaster relief there are sometimes thousands of victims who must be processed. They need information about receiving help. Following some disasters there are no available offices. With this transformer desk you can set up office with a complete set of files in the middle of the disaster where the people are.

Camp directors also will find this design useful. The filing cabinets can be used year round for camp materials. When it comes time to register campers and operate a camp office, just transport the desk to the desired location and unfold the flaps. Now you have an on-site work station.

Score keepers at Royal Ambassador

track meets will find this desk to be convenient and efficient. You might even find it helpful to use the desk exclusively for such an event, keeping records permanently in the filing cabinet.

Churches with limited space that only occasionally need a desk will find this plan useful. This desk is convenient for church office volunteers who spend just a few hours a week at their task.

In Part 1 we will cut the parts and make the drawers. Part 2 has final assembly plans.

The materials for this plan cost \$140 or more. It will take up to 16 hours to build.

### Tools and Materials Required

Router and square bit  
Belt sander  
Table saw and or radial arm saw  
Sabre saw

Skil saw

Drill press

1-inch wood bit

Electric screwdriver

Dado blade

4 x 8 x 1/2-inch sheet of white pine plywood (good on one side)

4 x 4 x 3/4-inch sheet of white pine or birch plywood with a wood core

16 x 48 x 1/4-inch plywood (good on one side)

44 linear feet of 1 x 12 white pine

24 inches of 2-inch piano hinge with 3/4-inch screws

28 inches of 2-inch piano hinge with 3/4-inch screws

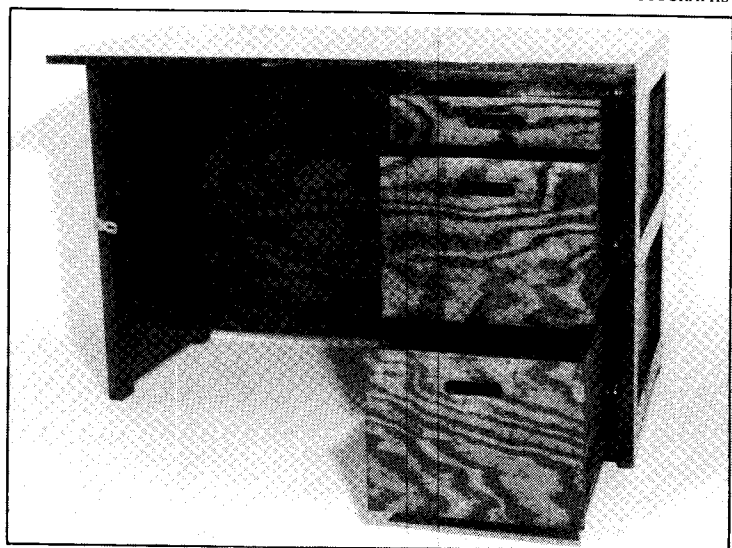
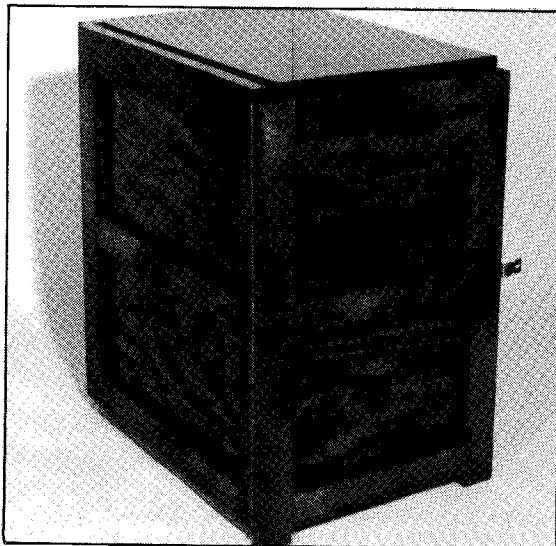
28 inches of 1/2-inch piano hinge with 3/4-inch screws

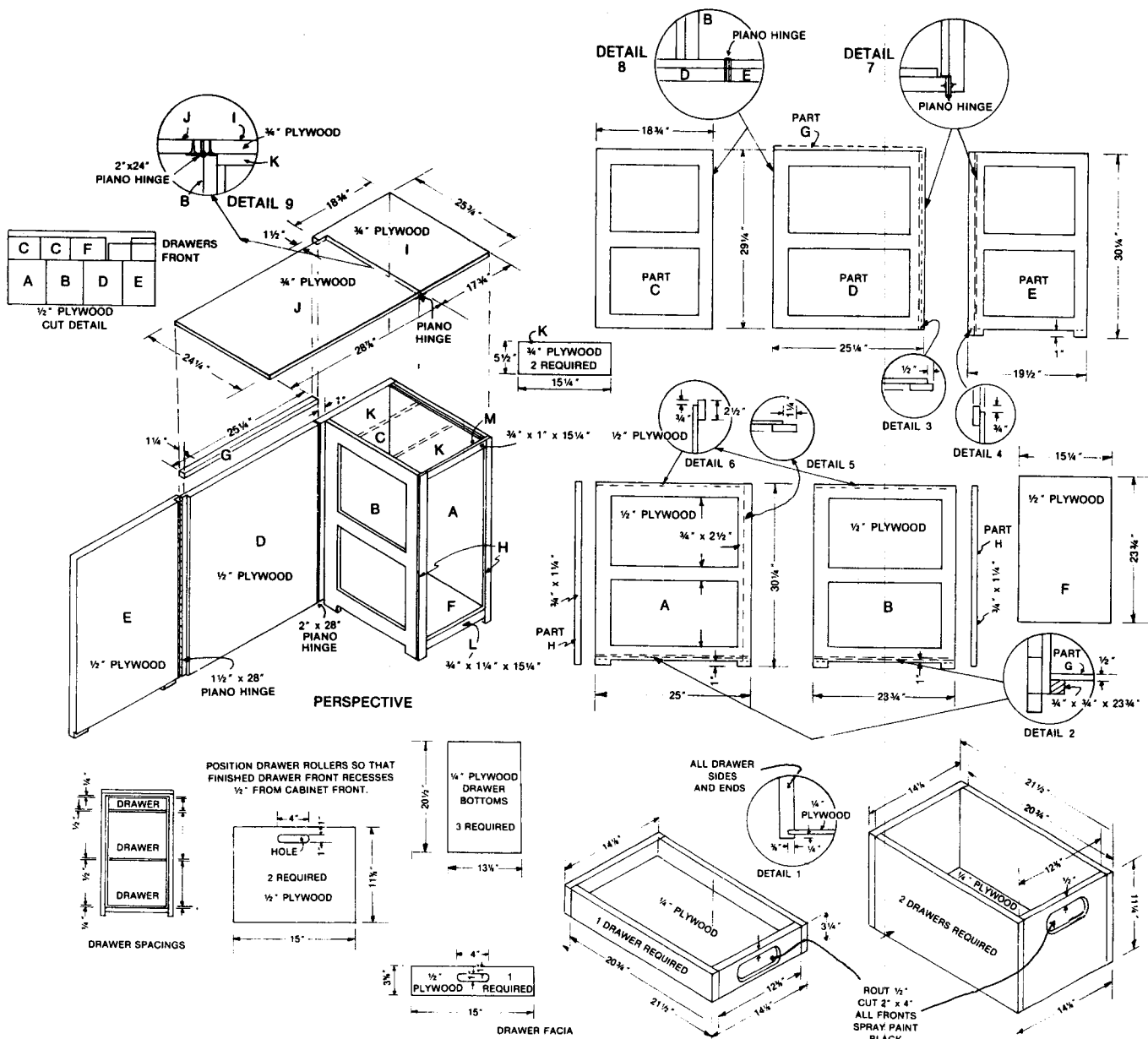
Wood glue

1/2 pound of 2 1/2-inch finish nails

CONTINUED NEXT PAGE

BROTHERHOOD COMMISSION PHOTOGRAPHS





CONTINUED FROM PREVIOUS PAGE

- 1/2 pound of 1-inch finish nails
- 1 pound of 1-inch drywall screws
- 1/2 pound of 2-inch drywall screws
- 1/2 pound of 2-inch finish nails
- 1/4 pound of 1 1/4-inch drywall screws
- 3 pair of 22-inch drawer rollers with screws
- Steel wool
- Stain
- Polyurethane
- Black spray paint

**Steps**

1. Cut the 1 x 12 to make the three file cabinet drawers. Cut four pieces 20 3/8 inches long. Cut two pieces 14 7/8 inches long and two pieces 12 3/8 inches long. From one 1 x 12, rip a 96-inch piece 3 1/2 inches wide. From this piece you will cut the tops and sides to the top drawer. The dimensions are 14 7/8, 12 3/8, and two pieces 20 3/8.

Set your dado blade to 3/8 inch deep and 1/4 inch wide (see Detail 1). Cut the groove in the bottom portion of each drawer side and ends. Lay these parts aside.

2. Using 1/4-inch plywood, cut three pieces 13 7/8 inches wide and 20 1/2 inches long. Assemble the three drawers using wood glue on each joint and two-inch finish nails. At this point rout a 2 x 4-inch cut 1/2 inch deep in the front of each drawer to make handles. Spray paint the routed out portion of each door. Lay the drawers aside.

3. Rip remaining 1 x 12 into 2 1/2-inch width material.

4. From the 1/2-inch plywood cut pieces A, B, C, D, E and F. The dimensions are: A=28 1/2 x 23 3/4; B=28 1/2 x 23 3/4; C=18 3/4 x 14 7/8 (these pieces combine to form one piece 29 1/4-inches tall); D=24 3/4 x 29 1/4; E=19 1/4 x 29 1/4;

and F=15 1/4 x 23 3/4. To make drawer fascias, cut two pieces 15 x 11 1/8 and one piece 15 x 3 5/8.

From the 3/4-inch plywood cut parts I and J with a Skil saw and jigsaw. Part G, 1 1/4 x 25 1/4, is also cut from the 3/4-inch plywood. From the remaining 3/4-inch plywood, cut two K parts 5 1/2 x 15 1/4. From the remaining 1 x 2 1/2 material, cut two H parts 3/4 x 1 1/4 x 30 1/4. Cut part L 3/4 x 1/4 x 15 1/4. Cut one M part 3/4 x 1 x 15 1/4. Cut two pieces 3/4 x 3/4 x 23 3/4 as supports for part G.

*M.B. Howard is a Mission Service Corps volunteer serving as construction fellowship coordinator of the National Fellowship of Baptists in Missions. If you have a design idea appropriate for use in missions, send them to Missions Blueprints, 1548 Poplar Ave., Memphis, TN 38104.*